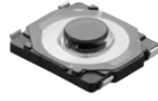


# TACT switch



## TSTB type

### TSTB19 Series



(size : 2.7×3.0×0.65)

Vertical push Surface mount type

#### ■ Features

- Surface mount type tact switch.
- Reflow solderable.
- Vertical operating direction.
- Dust&Moisture protective structure.

#### ■ Applications

- Various controls for devices in automotive.
- Controls for image/sound devices, radio equipment.
- Operating signal input switches, etc.

#### ■ Dimensions

TSTB19-□□□□□ □□

#### ■ Main Specifications

Rating	50mA 12V DC
Travel	0.1±0.05mm
Contact Resistance	100mΩ Max
Operating temperature	-20°C~70°C (45%~85% RH)
Bounce	10m sec Max
Operating Force	160±40gf
Operating Life(Cycle)	100,000

#### ■ Products Line

**TSTB19** - □□□□□ □□  
(Products No.) (O/F)

Products No.	O/F	O/D	Terminal Type	Guide Boss	Drawing No
<b>CJOOA</b>	□□	Vertical	J-bent	With-out	1

Operating Force □□	160±40gf	<b>16</b>
--------------------	----------	-----------

No.	3D Style	Dimension Type (Unit : mm)	PCB pattern dimension Circuit Diagram
1	CJOOA □□		

T  
S  
T