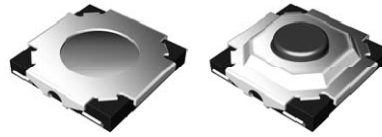


TACT switch



TSTB type

TSTB11 Series



(size : 5.1×5.2×h)

Vertical push Surface mount type

T
S
T

■ Features

- Surface mount type tact switch.
- Reflow solderable.
- Vertical operating direction.
- Dust&Moisture protective structure.

■ Applications

- Various controls for devices in automotive.
- Controls for image/sound devices, radio equipment.
- Operating signal input switches, etc.

■ Main Specifications

Rating	50mA 12V DC
Travel	0.25±0.1mm
Contact Resistance	100mΩ Max
Operating temperature	-20°C~70°C (45%~85% RH)
Bounce	10m sec Max
Operating Force	160±40gf 250±60gf
Operating Life(Cycle)	200,000 100,000

■ Products Line

TSTB11 - □□□□□ □□
(Products No.) (O/F)

Products No.	O/F	O/D	Ground Cover	Knob height	Drawing No
CJOA	□□	Vertical	With-out	With-out	1
CJOB	□□		With-out	With-out	2
CJOC	□□		With-out	1.5mm	3
CJOD	□□		With-out	1.7mm	3
CJOE	□□		With-out	4.3mm	3
CJWC	□□		With	1.5mm	4
CJWD	□□		With	1.7mm	4
CJWE	□□		With	4.3mm	4

Operating Force □□	160±40gf	16	250±60gf	25
--------------------	----------	-----------	----------	-----------

■ Dimensions

TSTB11-□□□□□ □□

No.	3D Style	Dimension Type (Unit : mm)	PCB pattern dimension Circuit Diagram								
1	CJOOA □□										
2	CJOOB □□										
3	CJOO□ □□ h (mm)		<table border="1"> <tr> <td>h (mm)</td> <td></td> </tr> <tr> <td>C</td> <td>1.5</td> </tr> <tr> <td>D</td> <td>1.7</td> </tr> <tr> <td>E</td> <td>4.3</td> </tr> </table>	h (mm)		C	1.5	D	1.7	E	4.3
	h (mm)										
C	1.5										
D	1.7										
E	4.3										
4	CJOW□ □□ h (mm)		<table border="1"> <tr> <td>h (mm)</td> <td></td> </tr> <tr> <td>C</td> <td>1.5</td> </tr> <tr> <td>D</td> <td>1.7</td> </tr> <tr> <td>E</td> <td>4.3</td> </tr> </table>	h (mm)		C	1.5	D	1.7	E	4.3
	h (mm)										
C	1.5										
D	1.7										
E	4.3										

T
S
T