

# TACT switch

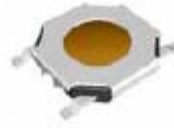


## TSTB type

### TSTB10 Series



(size : 5.1×5.2×h)



Vertical push Surface mount type

T  
S  
T

#### ■ Features

- Surface mount type tact switch.
- Reflow solderable.
- Vertical operating direction.
- Dust&Moisture protective structure.

#### ■ Applications

- Various controls for devices in automotive.
- Controls for image/sound devices, radio equipment.
- Operating signal input switches, etc.

#### ■ Main Specifications

Rating	50mA 12V DC
Travel	0.25±0.1mm
Contact Resistance	100mΩ Max
Operating temperature	-20°C~70°C (45%~85% RH)
Bounce	10m sec Max
Operating Force	160±40gf 250±60gf
Operating Life(Cycle)	200,000 100,000

#### ■ Products Line

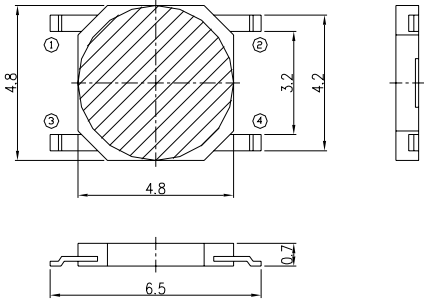
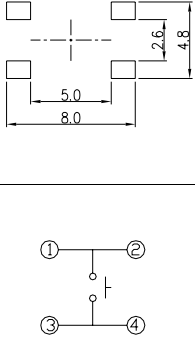
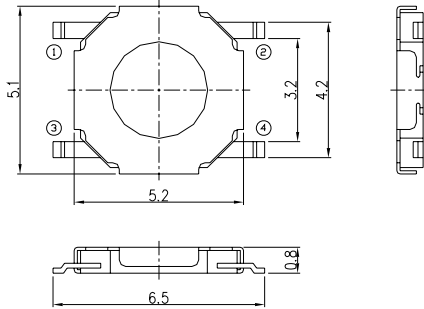
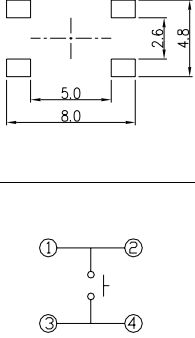
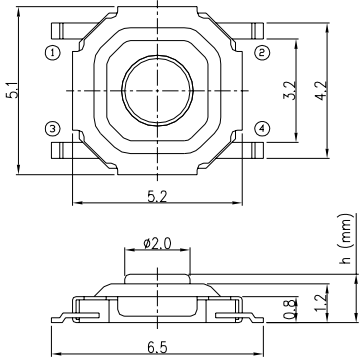
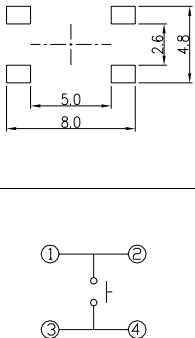
**TSTB10** - □□□□□ □□  
(Products No.) (O/F)

Products No.	O/F	O/D	Ground Cover	Knob height	Drawing No
<b>CSOOA</b>	□□	Vertical	With-out	With-out	1
<b>CSOOB</b>	□□		With-out	With-out	2
<b>CSOOC</b>	□□		With-out	1.5mm	3
<b>CSOOD</b>	□□		With-out	1.7mm	3
<b>CSOOE</b>	□□		With-out	4.3mm	3

Operating Force □□	160±40gf	<b>16</b>	250±60gf	<b>25</b>
--------------------	----------	-----------	----------	-----------

■ Dimensions

TSTB10-□□□□□ □□

No.	3D Style	Dimension Type (Unit : mm)	PCB pattern dimension Circuit Diagram								
1	CSOOA □□										
2	CSOOB □□										
3	CSOO□ □□		<table border="1" data-bbox="999 1198 1129 1391"> <thead> <tr> <th colspan="2">h (mm)</th> </tr> </thead> <tbody> <tr> <td>C</td> <td>1.5</td> </tr> <tr> <td>D</td> <td>1.7</td> </tr> <tr> <td>E</td> <td>4.3</td> </tr> </tbody> </table> 	h (mm)		C	1.5	D	1.7	E	4.3
	h (mm)										
C	1.5										
D	1.7										
E	4.3										
h (mm)											

T  
S  
T