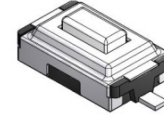
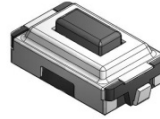
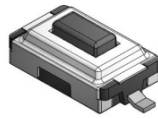


TACT switch



TSTB type

TSTB06 Series



(size : 3.6×6.0×2.5)

Vertical push Surface mount type

■ Features

Surface mount type tact switch.
 Reflow solderable.
 Vertical operating direction.
 Dust&Moisture protective structure.

■ Applications

Various controls for devices in automotive.
 Controls for image/sound devices, radio equipment.
 Operating signal input switches, etc.

■ Main Specifications

Rating	50mA 12V DC			
Travel	0.25±0.1mm			
Contact Resistance	100mΩ Max			
Operating temperature	-20°C~70°C (45%~85% RH)			
Bounce	10m sec Max			
Operating Force	100±30gf	130±30gf	180±50gf	250±60gf
Operating Life(Cycle)	50,000	50,000	50,000	30,000

■ Products Line

TSTB06 - □□□□□ □□
 (Products No.) (O/F)

Products No.	O/F	O/D	Terminal Type	Guide Boss	Drawing No
C500A	□□	Vertical	S-bent	With-out	1
C100A	□□		J-bent	With-out	2
C500A	□□		Flat	With-out	3

Operating Force □□	100±30gf	10	130±30gf	13
	180±50gf	18	250±60gf	25

T
S
T

■ Dimensions

TSTB06-□□□□□ □□

T
S
T

No.	3D Style	Dimension Type (Unit : mm)	PCB pattern dimension Circuit Diagram
1	CSOOA □□		
2	CJOOA □□		
3	CFOOA □□		