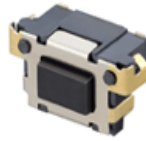


TACT switch



TSTA type

TSTA09 Series



(size : 6.2×3.0×3.5) Side push Surface mount type

■ Features

Surface mount type tact switch.
 Reflow solderable.
 Horizontal operating direction.
 Sharp "click" feel with a positive tactile feedback.

■ Applications

Office equipment, Communication apparatus, TV sets, VCRs.
 Portable audio devices, Personal digital assistant.
 Operating signal input switches, etc.

■ Main Specifications

Rating	50mA 12V DC	
Travel	0.25±0.1mm	
Contact Resistance	100mΩ Max	
Operating temperature	-20°C~70°C (45%~85% RH)	
Bounce	10m sec Max	
Operating Force	100±30gf	160±40gf
Operating Life(Cycle)	100,000	100,000

■ Products Line

TSTA09 - DJOWA
 (Products No.) (O/F)

Operating Force	<input type="checkbox"/> <input type="checkbox"/>	100±30gf	10	160±40gf	16
-----------------	---	----------	-----------	----------	-----------

■ Dimensions

TSTA09-DJOWA

No.	3D Style	Dimension Type (Unit : mm)	PCB pattern dimension Circuit Diagram
1	DJOWA <input type="checkbox"/> <input type="checkbox"/>		

T
S
T