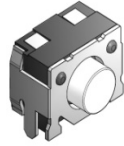


TACT switch



TSTA type

TSTA08 Series



(size : 4.5×3.4×3.4) Side push Surface mount type

T
S
T

■ Features

Surface mount type tact switch.
Reflow solderable.
Horizontal operating direction.

■ Applications

Portable devices.
Mobile phones and personal
digital assistants.
Operating signal input switches,
etc.

■ Dimensions

TSTA08-DJOWA □□

■ Main Specifications

Rating	50mA 12V DC
Travel	0.20±0.1mm
Contact Resistance	500mΩ Max
Operating temperature	-20°C~70°C (45%~85% RH)
Bounce	10m sec Max
Operating Force	160±40gf 250±60gf
Operating Life(Cycle)	50,000 30,000

■ Products Line

TSTA08 - DJOWA □□

(Products No.) (0/F)

Operating Force	□□	160±40gf	16	250±60gf	25
-----------------	----	----------	----	----------	----

No.	3D Style	Dimension Type (Unit : mm)	PCB pattern dimension Circuit Diagram
1	DJOWA □□		