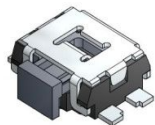


TACT switch



TSTA type

TSTA02 Series



(size : 3.5×3.6×1.5) Side push Surface mount type

T
S
T

■ Features

- Surface mount type tact switch.
- Reflow solderable.
- Horizontal operating direction.
- Dust&Moisture protective structure.

■ Applications

- Various controls for devices in automotive.
- Controls for image/sound devices, radio equipment.
- Operating signal input switches, etc.

■ Main Specifications

Rating	50mA 12V DC
Travel	0.2±0.1mm
Contact Resistance	100mΩ Max
Operating temperature	-20°C~70°C (45%~85% RH)
Bounce	10m sec Max
Operating Force	160±40gf 250±60gf
Operating Life(Cycle)	100,000 50,000

■ Products Line

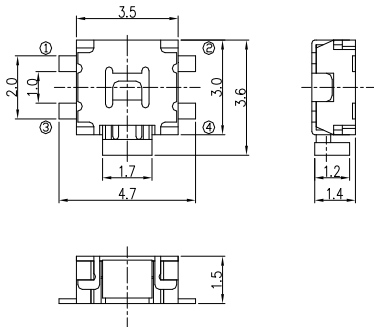
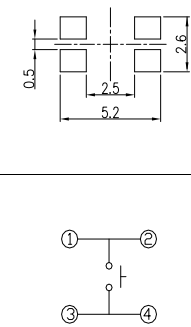
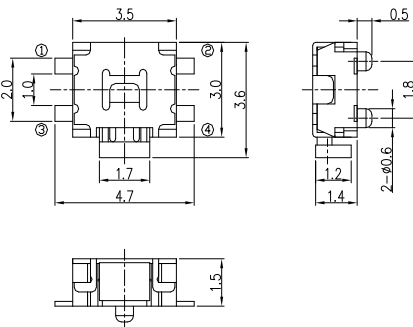
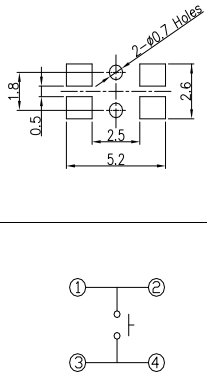
TSTA02 - □□□□□ □□
(Products No.) (0/F)

Products No.	0/F	0/D	Terminal Type	Guide Boss	Drawing No
DF00A	□□	Horizontal	Flat	With-out	1
DFWOA	□□		Flat	With	2

Operating Force	□□	160±40gf	16	250±60gf	25
-----------------	----	----------	-----------	----------	-----------

■ Dimensions

TSTA02-□□□□ □□

No.	3D Style	Dimension Type (Unit : mm)	PCB pattern dimension Circuit Diagram
1	DFO0A □□		
2	DFWOA □□		

T
S
T