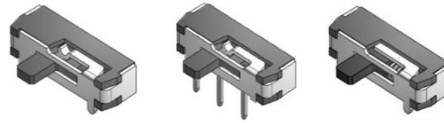


SLIDE switch



TSSA type

TSSA07 Series



(size : 8.8×3.0×2.0)

Snap-in & Surface mount Type

■ Features

Snap-in & Surface mount type slide switch.
Outline dimension 8.8mm X 3.0mm
Standard and Recoil operating type

■ Applications

For selecting modes of digital camcorders, digital cameras.
Office devices, Sound devices, MP3P
Operating signal input switches, etc.

■ Main Specifications

Rating	0.3A 6V DC
Travel	2mm
Contact Resistance	70mΩ Max
Operating temperature	-20°C~70°C (45%~85% RH)
Operating Force	150±100gf
Operating Life(Cycle)	10,000

■ Products Line

TSSA07 - □□□□□□
(Knob.)

Products No.	Operating Type	Soldering Type	Guide Boss	Drawing No
DFOWAT	Standard	SMT	With	1
DFOOAT			Without	2
BPOOAT		Snap-in	Without	3
BPOWAT			With	4
DFOWAR	Single-side recoil to Right	SMT	With	5
DFOWAL	Single-side recoil to Left		With	6

■ Dimensions

TSSA07 - □□□□□□

No.	3D Style	Dimension Type (Unit : mm)	PCB pattern dimension Circuit Diagram
1	DFOWAT		
2	DFOOAT		
3	BPOOAT		
4	BPOWAT		



■ Dimensions

TSSA07 - □□□□□□

No.	3D Style	Dimension Type (Unit : mm)	PCB pattern dimension Circuit Diagram
5	DFOWAR		

