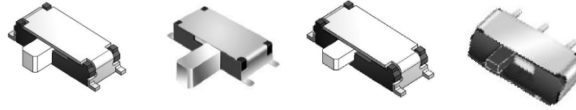


SLIDE switch



TSSA type

TSSA02 Series



(size : 6.7×2.7×1.4) Surface mount type

T
S
S

■ Features

- Surface mount type slide switch.
- Outline dimension 6.7mm X 2.7mm
- With guide boss structure.

■ Applications

- For keylocking mobile phones, MP3P
- For selecting modes of digital camcorders, digital cameras.
- Operating signal input switches, etc.

■ Main Specifications

Rating	0.3A 4V DC
Travel	1.5±0.3mm
Contact Resistance	70mΩ Max
Operating temperature	-20°C~70°C (45%~85% RH)
Operating Force	150±100gf
Operating Life(Cycle)	10,000

■ Products Line

TSSA02 - DFWW□T

(Knob Color)

Products No.	Knob Thickness	Knob Length	Guide Boss	Drawing No
DFWWAT & BT	1.1mm	1.5mm	With	1
DFWWCT & DT	1.1mm	2.3mm	With	2
DFWWET & FT	0.4mm	1.5mm	With	3
DFWWGT & HT	1.1mm	1.5mm	With	4

Knob Color □	
WHITE	A、C、E、G
BLACK	B、D、F、H

■ Dimensions

TSSA02 – DFWW□T

No.	3D Style	Dimension Type (Unit : mm)	PCB pattern dimension Circuit Diagram
1	DFWWAT & BT		
2	DFWWCT & DT		
3	DFWWET & FT		
4	DFWWGT & HT		

TSS