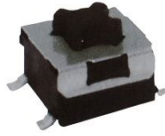


Double Action Tact

TSFA type

TSFA05 Series



(size : 6.2×6.6×4.3) Double Action Type Tact Switch

■ Features

These surface-mounting type keyboard switches are ideal for high density mounting. A single-pole-double-throw type offers a double action, turning on the first contact with the first push and the second step by pushing again. Reflow solderable.

■ Applications

Operating switches in all types of electronic equipment such as audio apparatus office equipment, communications apparatus, measuring instruments, TV sets, VCRs, etc

■ Dimensions

TSFA05-CSAA

■ Main Specifications

Rating	50mA 12V DC
Travel	1st 0.4±0.1mm 2st 0.6±0.1mm
Contact Resistance	100mΩ Max
Operating temperature	-20°C~70°C (45%~85% RH)
Operating Force	1st 100±50gf 2st 400±50gf
Operating Life(Cycle)	20,000

■ Products Line

TSFA05 - CSAA

Products No.	O/D	Terminal Type	Guide Boss	Drawing No
CSAA	Vertical	S-bent	With	1

T
S
F

No.	3D Style	Dimension Type (Unit : mm)	PCB pattern dimension Circuit Diagram
1	DJAA		<p>PCB pattern dimension: 8.4mm total width, 4.5mm total height, 2mm terminal spacing, 0.1mm terminal thickness, 4-1.4x1.6mm land.</p> <p>Circuit Diagram: Single Pole Double Throw (SPDT) switch. Terminal 1 is common. Terminal 2 is normally open (NO). Terminal 3 is normally closed (NC). States: OFF (1-3), 1st ON (1-2), 2nd ON (1-3).</p>